

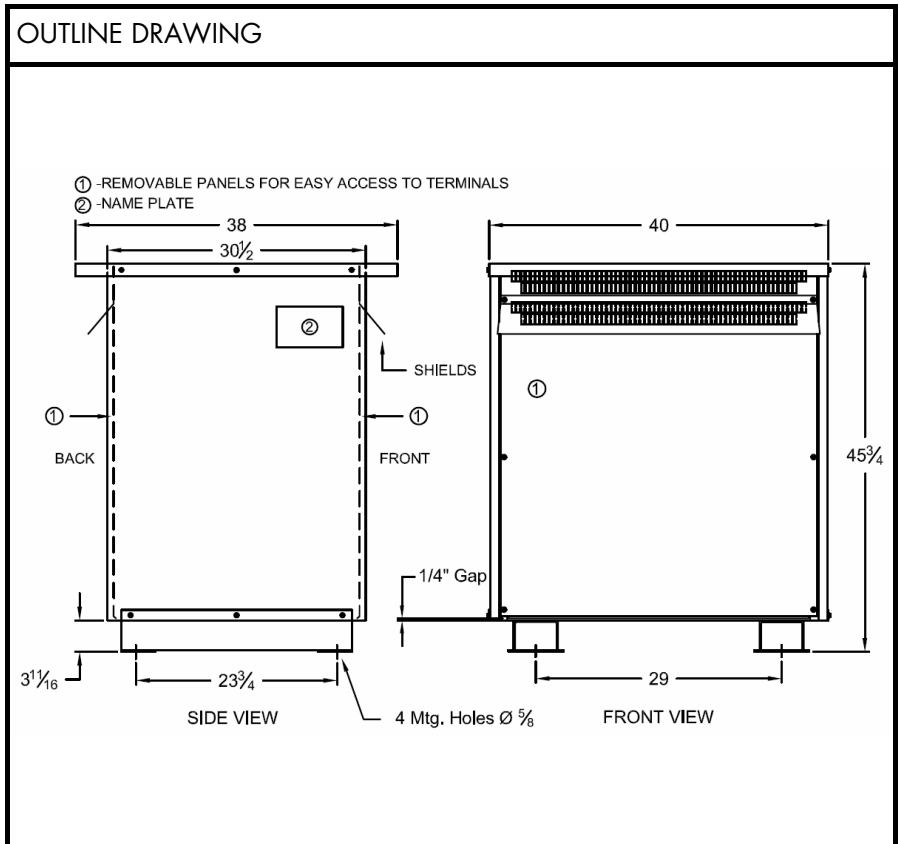


**BEAVER ELECTRICAL MACHINERY**  
 7440 LOWLAND DRIVE, BURNABY, BC, CANADA  
 TEL: (604) 431-5000 FAX: (604) 431-5066  
 www.beaverelectrical.com

**TVR SERIES  
 SPECIFICATION SHEET**

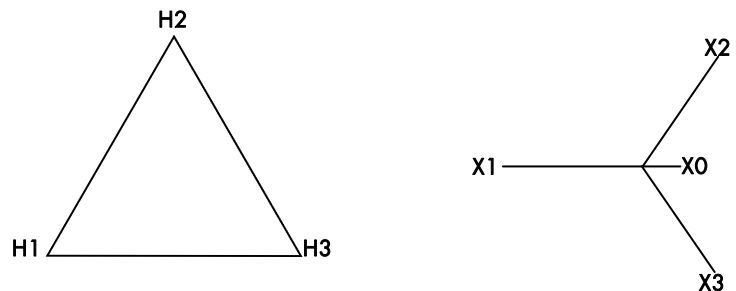
**3 PHASE TRANSFORMER  
 TYPE: DRY TYPE  
 FLOOR MOUNT**

CAT. NO.: TVR225S-S34A  
 KVA: 225  
 PRIMARY VOLT: 480▲  
 SECONDARY VOLT: 480Y/277  
 PHASE: 3  
 FREQ: 60 HZ  
 WINDING MATL: Aluminum  
 WEIGHT: 1640 LBS  
 INSUL. CLASS: 220°C  
 TEMP. RISE: 150°C  
 IMPEDANCE: ~5.0%  
 Eff. @ 35% load: 98.5%  
 BIL: 10 kV  
 ENCLOSURE: TYPE 2  
 NEMA 3R with optional kit  
 APPROVALS: UL, CSA



**CONNECTION AND TAP INFORMATION**

PRI VOLT	INTERCONNECT	PRI LINE CONN	SEC VOLT	PHASE	SEC LINE CONN
504	1-2	H1, H2, H3	480	3	X1, X2, X3
492	2-3	H1, H2, H3	277	1	BETWEEN X0 AND X1 or X2 or X3
480	3-4	H1, H2, H3			
468	4-5	H1, H2, H3			
456	5-6	H1, H2, H3			



NOTE: Specifications and dimensions subject to change without notice