



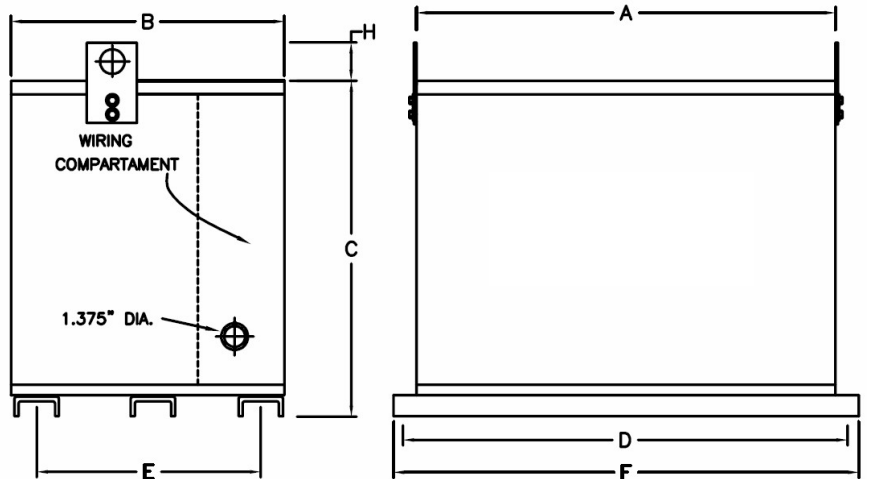
BEAVER ELECTRICAL MACHINERY
 7440 LOWLAND DRIVE, BURNABY, BC, CANADA
 TEL: (604) 431-5000 FAX: (604) 431-5066
 www.beaverelectrical.com

**TER SERIES
 SPECIFICATION SHEET**

**3 PHASE TRANSFORMER
 TYPE: EPOXY ENCAPSULATED
 FLOOR MOUNT**

CAT. NO.: TER45T-H34C
 KVA: 45
 PRIMARY VOLT: 600 ▲
 SECONDARY VOLT: 208Y/120
 PHASE: 3
 FREQ: 60 HZ
 WINDING MATL: Copper
 WEIGHT: 785 LBS
 INSUL. CLASS: 200°C
 TEMP. RISE: 130°C
 IMPEDANCE: 2.0 - 3.0%
 BIL: 10 kV
 ENCLOSURE: TYPE 3R
 APPROVALS: CSA, UL

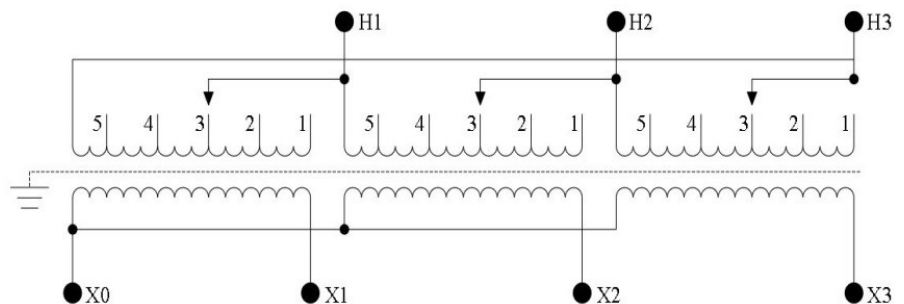
OUTLINE DRAWING



| | | | | | | |
|-----|-----|-----|-------|-------|-----|---|
| A | B | C | D | E | F | H |
| 32" | 18" | 25" | 34.5" | 14.5" | 36" | |

WIRING AND CONNECTION DIAGRAM

| PRI VOLT | JUMPERS TO | PRI LINE CONN | SEC VOLT | PHASE | SEC LINE CONN |
|----------|------------|---------------|----------|-------|-------------------------------|
| 630 | 1-1-1 | H1, H2, H3 | 208 | 3 | X1, X2, X3 |
| 615 | 2-2-2 | H1, H2, H3 | 120 | 1 | BETWEEN X0 AND X1 or X2 or X3 |
| 600 | 3-3-3 | H1, H2, H3 | | | |
| 585 | 4-4-4 | H1, H2, H3 | | | |
| 570 | 5-5-5 | H1, H2, H3 | | | |



NOTE: Specifications and dimensions subject to change without notice