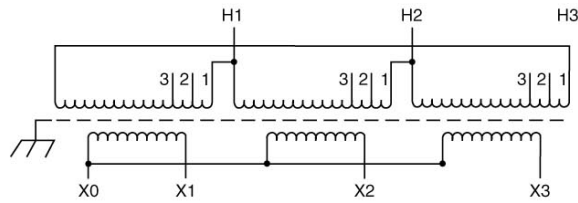
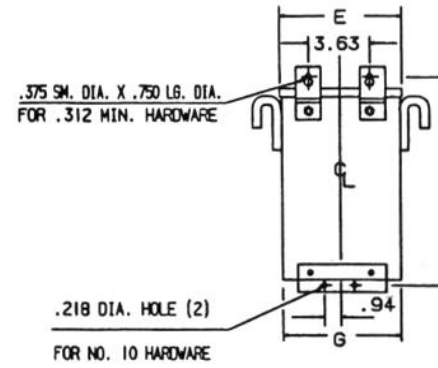
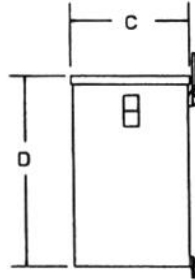
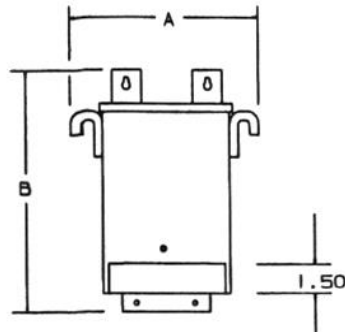


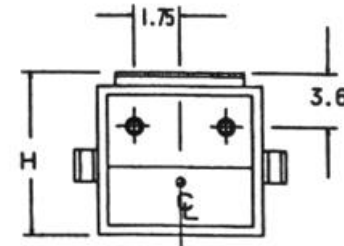
Revisions



Primary Volts	Connect Primary Lines To	Inter-Connect	Connect Secondary Lines To
600	H1, H2, H3	1	
570	H1, H2, H3	2	
540	H1, H2, H3	3	

Secondary Volts

208		X1, X2, X3
120 1 phase		X1 to X0 X2 to X0 X3 to X0



BOTTOM

NOTES:

1. KNOCKOUTS:

1.69 DIA. FOR 1.25 CONDUIT
1.13 DIA. FOR .75 CONDUIT



Type No.

KVA	CATALOG NUMBER		VOLTAGE		WIRING DIAGRAM	WEIGHT	PHASE	FREQ.
			HIGH	LOW				
9.0	T-2A-79332-1S		600Δ	208Y/120		180 Lbs	3φ	60 Hz
	A	B	C	D	E	F	G	H
	17.77	15.28	11.17	12.71	15.27	14.03	15.15	11.52

Insulation:	180°C	Encapsulated Design	Temp Rise:	115°C
-------------	-------	---------------------	------------	-------

DATE: August 12, 2010