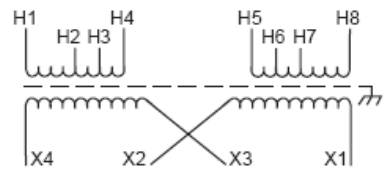
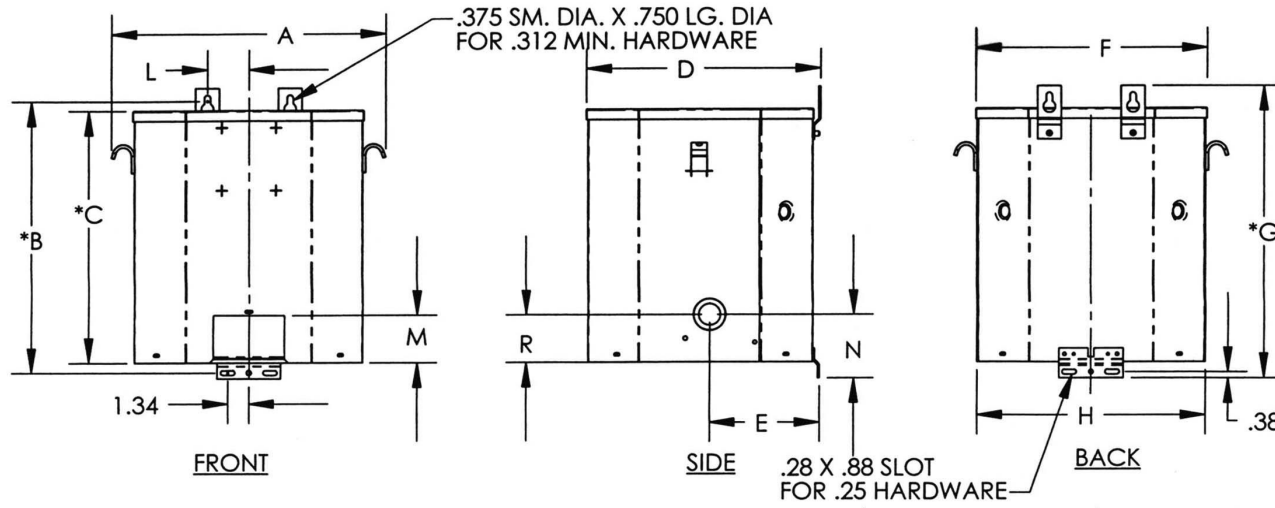
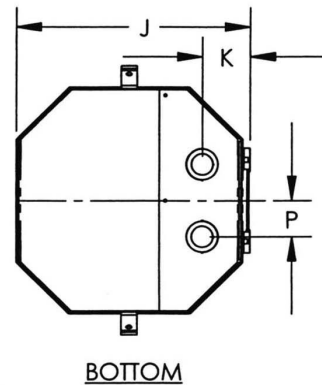


Revisions



Primary Volts	Connect Primary Lines To	Inter-Connect	Connect Secondary Lines To
120	H1 & H8	H1 to H6 H3 to H8	
208	H1 & H8	H2 to H7	
240	H1 & H8	H3 to H6	
277	H1 & H8	H4 to H5	
Secondary Volts			
240		X2 to X3	X1 & X4
120/240		X2 to X3	X1, X3, X4
120		X1 to X3 X2 to X4	X1 & X4



Type No.

KVA	CATALOG NUMBER	VOLTAGE		Enclosure	WEIGHT	PHASE	FREQ.
		HIGH	LOW				
10	T-2-79746-S	120/208/240/277	120/240	NEMA-3R	124 Lbs	1φ	60 Hz

TYPICAL PERFORMANCE DATA

Winding Rise	115°C	Regulation @ 100% PF	IMPEDANCE	1.78%	Typical Efficiency	98.29%
Insulation	180°C				No Load Losses	56W
Sound Level	45 dB				Full Load Losses	174W

A	B	C	D	E	F	G	H	J	K	L	M	N	P	R
13.50	14.18	12.81	10.84	4.85	11.12	15.19	11.00	10.63	2.18	1.75	2.25	3.13	1.88	3.00

Drawn:	ADR
DATE:	March 18, 2011