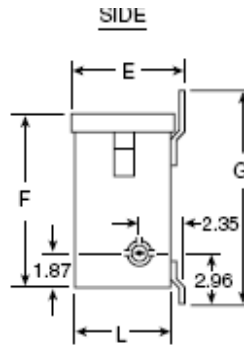
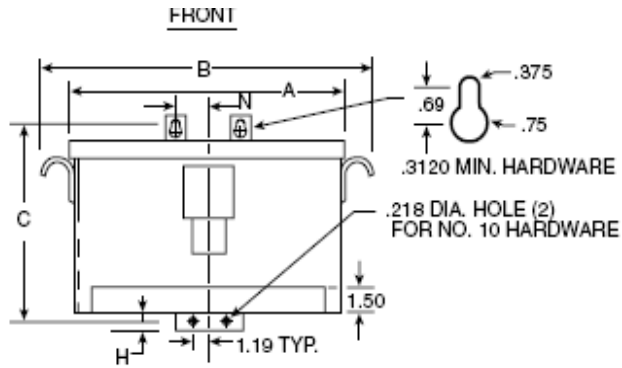
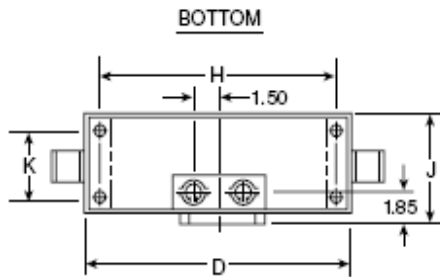


Revisions



PRIMARY: 600 Volts
SECONDARY: 480 Volts
TAPS: 2, 5% BNFC

Primary Volts	Alt Rating	Connect Primary Lines To	Inter-Connect	Connect Secondary Lines To
600	480	H1, H2, H3		
570	456	H4, H5, H6		
540	432	H7, H8, H9		

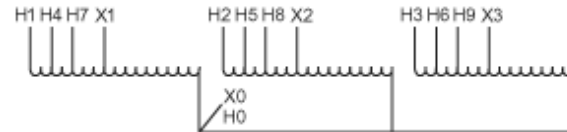


CERTIFIED DIMENSIONS

TOTALLY ENCLOSED

Secondary Volts

480	380			X1, X2, X3
277 1 phase	220 1 phase			X1 to X0 X2 to X0 X3 to X0



KVA	CATALOG NUMBER	VOLTAGE		TYPE	WEIGHT	PHASE	FREQ.
		HIGH	LOW				
15	T-2-52703-1	600/480	480/380	AUTO	104 Lbs	3φ	60 Hz

TYPICAL PERFORMANCE DATA

Winding Rise	115°C
Insulation	180°C
Sound Level	45 dB

Regulation @ 100% PF	
----------------------	--

IMPEDANCE	
-----------	--

Typical Efficiency@35%	99.45%
Full Load Losses	47.23 W
No Load Losses	23.6 W

A	B	C	D	E	F	G	H	J	K	L	M	N	P	R
16.87	19.25	14.46	16.72	7.37	13.06	15.21	.38	7.31		6.87		3.25		

Type No.

DATE:

--	--	--	--