

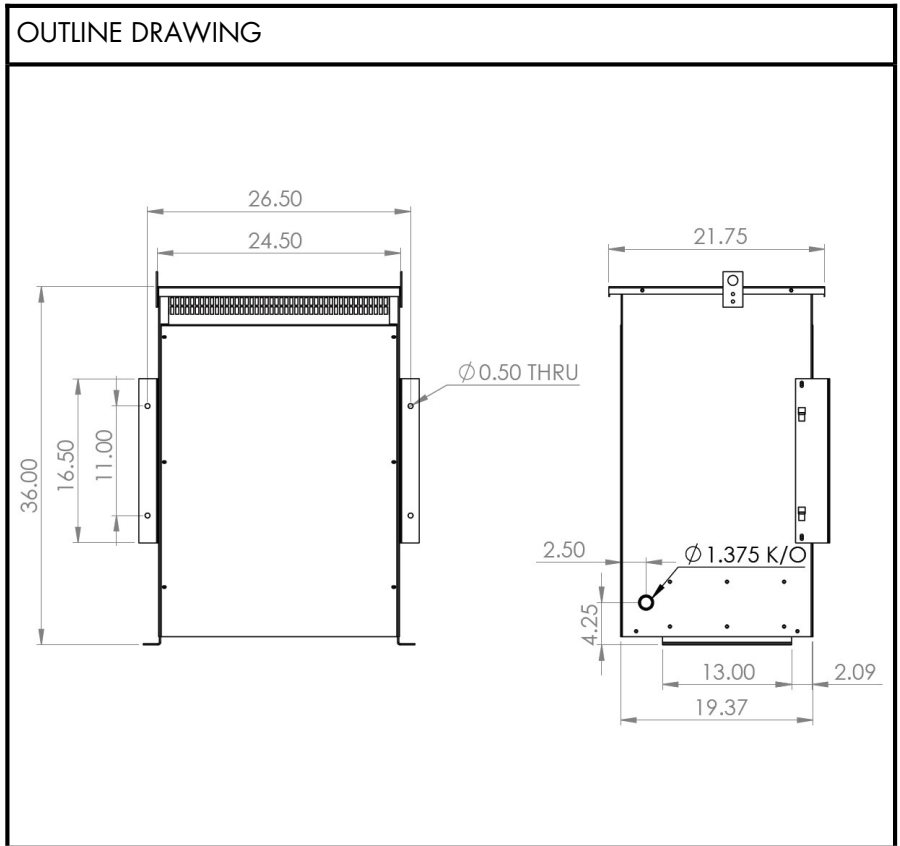


BEAVER ELECTRICAL MACHINERY
 7440 LOWLAND DRIVE, BURNABY, BC, CANADA
 TEL: (604) 431-5000 FAX: (604) 431-5066
 www.beaverelectrical.com

**SVR SERIES
 SPECIFICATION SHEET**

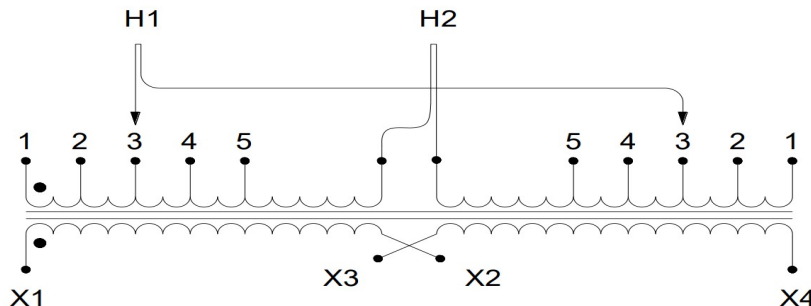
**1 PHASE ISOLATION TRANSFORMER
 TYPE: DRY TYPE**

CAT. NO.: SVR75H-G8A3
 KVA: 75
 HI VOLT: 208
 LOW VOLT: 120/240
 PHASE: 1
 FREQ: 60 HZ
 WEIGHT: 590 LBS
 INSUL. CLASS: 220°C
 TEMP. RISE: 150°C
 BIL: 10 kV
 IMPEDANCE: 4.5-5.5%
 WINDING: ALUMINUM
 ENCLOSURE: NEMA 2
 NEMA 3R WITH OPTIONAL KIT
 EFF. STANDARDS: NRCAN 2019, DOE 2016
 APPROVALS: UL, CSA



WIRING AND CONNECTION DIAGRAM

HI VOLT	% TAPS	JUMPERS TO	LOW VOLT	INTERCONNECT	SEC LINE CONN
218	105.0	1-1	240	X2 TO X3	X1 - X4
213	102.5	2-2	120/240	X2 TO X3	X1 - X2 - X4 (X2 IS A NEUTRAL)
208	100.0	3-3			
202	97.5	4-4	120	X1 TO X3 AND X2 TO X4	X1-X4
197	95.0	5-5			



NOTE: Specifications and dimensions subject to change without notice