

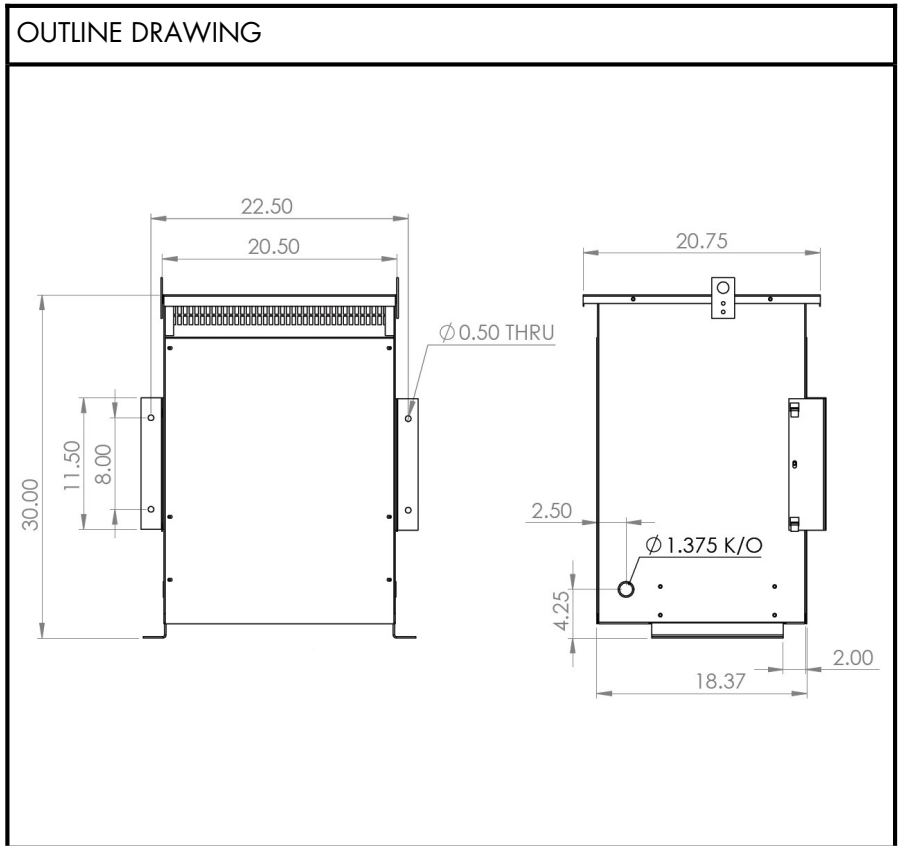


**BEAVER ELECTRICAL MACHINERY**  
 7440 LOWLAND DRIVE, BURNABY, BC, CANADA  
 TEL: (604) 431-5000 FAX: (604) 431-5066  
 www.beaverelectrical.com

**SVR SERIES  
 SPECIFICATION SHEET**

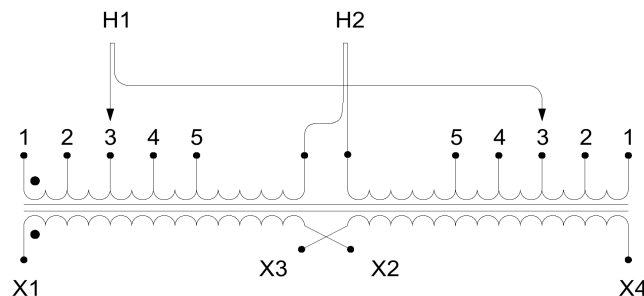
**1 PHASE ISOLATION TRANSFORMER  
 TYPE: DRY TYPE**

CAT. NO.: SVR37H-G8A3  
 KVA: 37  
 HI VOLT: 208  
 LOW VOLT: 120/240  
 PHASE: 1  
 FREQ: 60 HZ  
 WEIGHT: 325 LBS  
 INSUL. CLASS: 220°C  
 TEMP. RISE: 150°C  
 IMPEDANCE: 5.0 - 6.0%  
 WINDING: ALUMINUM  
 ENCLOSURE: NEMA 2  
 NEMA 3R WITH OPTIONAL KIT  
 EFF. STANDARDS: NRCAN 2019, DOE 2016  
 APPROVALS: UL, CSA



**WIRING AND CONNECTION DIAGRAM**

HI VOLT	% TAPS	JUMPERS TO	LOW VOLT	INTERCONNECT	SEC LINE CONN
218	105.0	1-1	240	X2 TO X3	X1 - X4
213	102.5	2-2	120/240	X2 TO X3	X1 - X2 - X4 (X2 IS A NEUTRAL)
208	100.0	3-3			
203	97.5	4-4	120	X1 TO X3 AND X2 TO X4	X1-X4
198	95.0	5-5			



NOTE: Specifications and dimensions subject to change without notice