

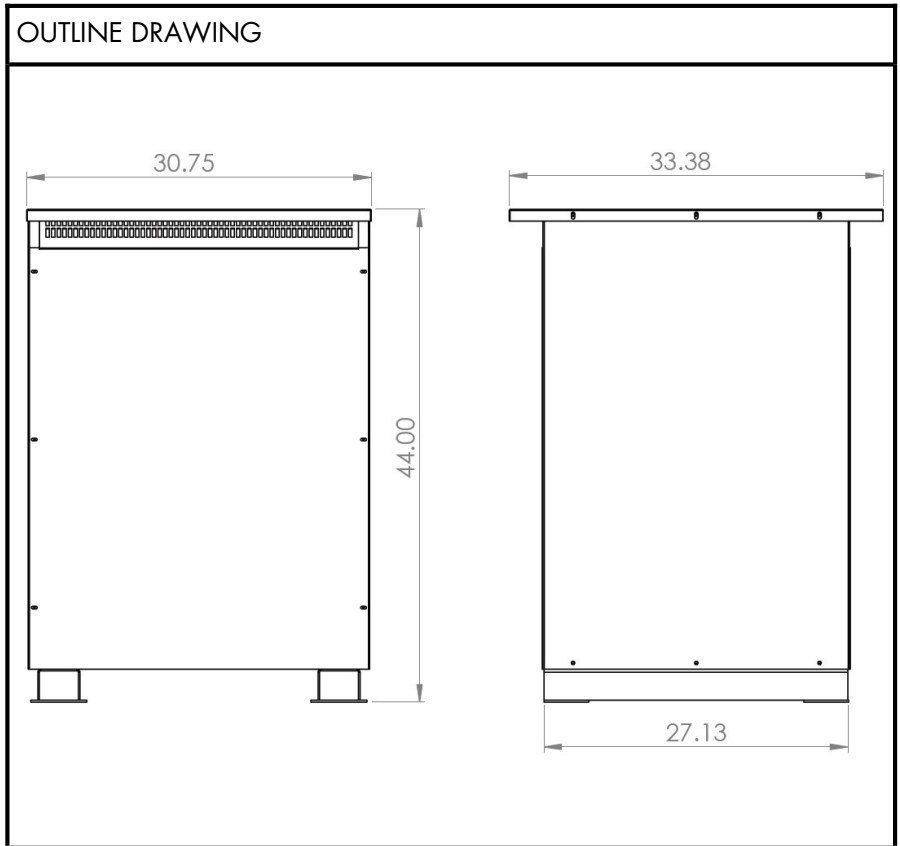


BEAVER ELECTRICAL MACHINERY
 7440 LOWLAND DRIVE, BURNABY, BC, CANADA
 TEL: (604) 431-5000 FAX: (604) 431-5066
 www.beaveelectrical.com

**SVR SERIES
 SPECIFICATION SHEET**

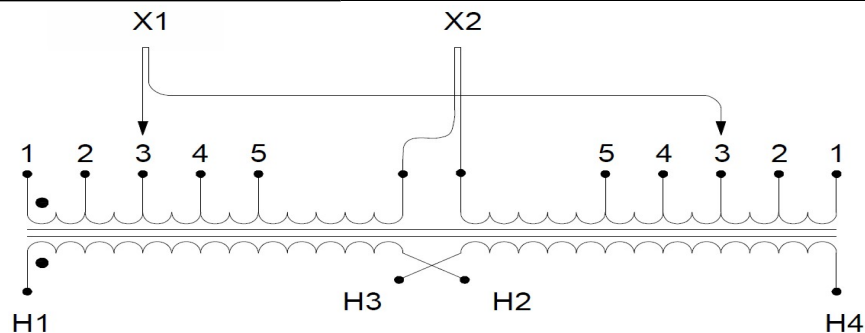
**1 PHASE ISOLATION TRANSFORMER
 TYPE: DRY TYPE**

CAT. NO.: SVR150K-J8A3
 KVA: 150
 LOW VOLT: 240
 HIGH VOLT: 300/600
 PHASE: 1
 FREQ: 60 HZ
 WEIGHT: 850 LBS
 INSUL. CLASS: 220°C
 TEMP. RISE: 150°C
 IMPEDANCE: 3.5-5.0%
 WINDING: ALUMINUM
 ENCLOSURE: NEMA 2
 NEMA 3R WITH OPTIONAL KIT
 EFF. STANDARDS: NRCAN 2019, DOE 2016
 APPROVALS: UL, CSA



WIRING AND CONNECTION DIAGRAM

LO VOLT	% TAPS	JUMPERS TO	HI VOLT	INTERCONNECT	SEC LINE CONN
252	105.0	1-1	600	H2 TO H3	H1-H4
246	102.5	2-2	300/600	H2 TO H3	H1-H2-H4 (H2 IS A NEUTRAL)
240	100.0	3-3			
234	97.5	4-4	300	H1 TO H3	H1-H4
228	95.0	5-5		H2 TO H4	



NOTE: Preliminary drawing only.
 Specifications subject to change by Beaver Electrical engineering dept.