

Products for the Entertainment Markets

Electrical Products

Cable Hangers
J-Hooks
Cable Cutters (H.K. Porter)
Cable Fault Locator and Tracers
High Voltage Gloves
Testing Plugs and Plug Repair
Cable Grips (Kellems)
Trolley Hardware (Phoenix)
Ground Check and Fault Monitors:
(AMR/Pemco/MCI)
String-A-Lights
Tie Wire
Belt Monitoring (Ensign/AMR)
Belt Switches (Conkie/Hawkeye)
Limit Switches (Cutter-Hammer)
Lighting Systems (SMC)
Coax Connectors
Vacuum Load Break Switches (SMC)
Connectors:
Woodhead/Burndy/T&B/3M/Amp/
Panduit
Low Voltage Connectors:
MCI/SMS Uni-Lock/P.D.P./Ensign
Victor

Electrical Cable

Bare Copper and Aluminum
Trolley Wire
Blasting Wire and Shot
S.O. Cords
Bore Hole Cable
Armoured Cable
Monitor and Sensor Cables
Computer Cables
Shuttle Car
Continuous Miner Cable
Shovel Cable
Pump Cable
Remote Drill Cord
Jumper Cable
Welding Cable
Loaders-Cutters-Drills
Locomotive Cable
Longwall Cable
Military Specifications
Mine Power Feeder
Traffic Signal
Communication
Building Wire
Portable Control Cables
Power Cable

Electrical Cable Manufacturers

BICC Cablec
Laribee Powerflex
Essex
Royal
Carol
A.I.W.
General
Prestolite
Service Wire

Cable Services

High and Low Voltage Reconditioned
Coupler Installation
Molded Pot Heads
Stress Cones
Jacket Patches
Reinsulation
Railbonds
Cable Splicing

Splice Kits

Plymouth
AMP
3M
RMS
MPI
RAYCHEM

Cable Repair Supplies

Plymouth - Tapes/Shielding Braid
Okonite - Tape/Splicing Cement
3M - Tape/Braid/Lugs
Rice Shielding Braid
Cable Jigs
Molds
Vulcanizers

Other Fine Products And Services

Exide Batteries
Douglas Batteries
Sounding Rods
Mine Sealant
Mine Ventilation Products
Mine Battery Repair
Battery Chargers
Pumps
Cable Guards

SMS OFFICE LOCATIONS

Sales & Technical Support

USA: 618-937-8333
Fax: 847-656-5094

Corporate Office

PO Box 188,
West Frankfort, IL 62896
Tel: 618-932-2151
Fax: 618-937-2715

Indiana

PO Box 172,
Petersburg, IN 47567
Tel: 812-354-9104
Fax: 812-354-2176

Kentucky

2180 Highway 70 West,
Central City, KY 42330
Tel: 270-754-9911
Fax: 270-754-9894

CANADIAN OFFICE • TORONTO

Sales & Technical Support

Canada: 647-808-0965
Fax: 847-656-5094

WWW.SMSCONNECTORS.COM



B-Connector Series

NEW! YELLOW (YEL), ORANGE (ORG), BROWN (BRN) colors now available for ALL B-Connector Series shown.

CSA Approved & UL Listed

PLUGS



Male Size #2-2/0 • Up to 290 Amps, 600 Volts

Female Size #2-2/0 • Up to 290 Amps, 600 Volts

Color	Complete Part No.	Contact Part No.	Insulated Sleeve	Color	Complete Part No.	Contact Part No.	Insulated Sleeve
BLACK	B20M-BLK	B20MCO	B20MRB-BLK	BLACK	B20F-BLK	B20FCO	B20FRB-BLK
RED	B20M-RED	*	B20MRB-RED	RED	B20F-RED	*	B20FRB-RED
GREEN	B20M-GRN	*	B20MRB-GRN	GREEN	B20F-GRN	*	B20FRB-GRN
WHITE	B20M-WHT	*	B20MRB-WHT	WHITE	B20F-WHT	*	B20FRB-WHT
BLUE	B20M-BLUE	*	B20MRB-BLUE	BLUE	B20F-BLUE	*	B20FRB-BLUE

Size #2/0 - 4/0 • Up to 400 Amps, 600 Volts

Size #2/0 - 4/0 • Up to 400 Amps, 600 Volts

Color	Complete Part No.	Contact Part No.	Insulated Sleeve	Color	Complete Part No.	Contact Part No.	Insulated Sleeve
BLACK	B40M-BLK	B40MCO	B40MRB-BLK	BLACK	B40F-BLK	B40FCO	B40FRB-BLK
RED	B40M-RED	*	B40MRB-RED	RED	B40F-RED	*	B40FRB-RED
GREEN	B40M-GRN	*	B40MRB-GRN	GREEN	B40F-GRN	*	B40FRB-GRN
WHITE	B40M-WHT	*	B40MRB-WHT	WHITE	B40F-WHT	*	B40FRB-WHT
BLUE	B40M-BLUE	*	B40MRB-BLUE	BLUE	B40F-BLUE	*	B40FRB-BLUE

PLUG HARDWARE

SHIMS CS1502

WIRE CW 1406

SET SCREW #2 - 4/0

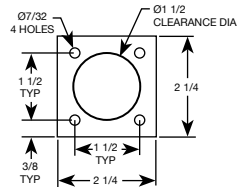
RETAINING PIN PP1875

PANEL MOUNTS



Male

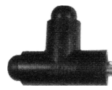
BLACK	B41M-BLK	B41MSS-BLK
RED	B41M-RED	B41MSS-RED
GREEN	B41M-GRN	B41MSS-GRN
WHITE	B41M-WHT	B41MSS-WHT
BLUE	B41M-BLUE	B41MSS-BLUE



Female

BLACK	B41F-BLK	B41FSS-BLK
RED	B41F-RED	B41FSS-RED
GREEN	B41F-GRN	B41FSS-GRN
WHITE	B41F-WHT	B41FSS-WHT
BLUE	B41F-BLUE	B41FSS-BLUE

ACCESSORIES



Color	Tapping "T"	Paralleling "T"	3-Fer	3 Fer/cable
BLACK	B40TT-BLK	B40PT-GRN	B3F-BLK	B3F24-BLK
RED	B40TT-RED	B40PT-GRN	B3F-RED	B3F24-RED
GREEN	B40TT-GRN	B40PT-GRN	B3F-GRN	B3F24-GRN
WHITE	B40TT-WHT	B40PT-GRN	B3F-WHT	B3F24-WHT
BLUE	B40TT-BLUE	B40PT-GRN	B3F-BLUE	B3F24-BLUE

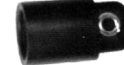
ADAPTORS



PROTECTIVE CAPS



NEW!
CAP-WSC-CLR
"Clear" Now Available!



Molded Panel Mount Snap Back Cover

Color	Male/Male	Female/Female	Color	Part No.	Color	Male	Female
BLACK	B40MM-GRN	B40FF-BLK	BLACK	CAP-WSC-BLK	BLACK	BPCM-BLK	BPCF-BLK
RED	B40MM-GRN	B40FF-RED	RED	CAP-WSC-RED	RED	BPCM-RED	BPCF-RED
GREEN	B40MM-GRN	B40FF-GRN	GREEN	CAP-WSC-GRN	GREEN	BPCM-GRN	BPCF-GRN
WHITE	B40MM-GRN	B40FF-WHT	WHITE	CAP-WSC-WHT	WHITE	BPCM-WHT	BPCF-WHT
BLUE	B40MM-GRN	B40FF-BLUE	BLUE	CAP-WSC-BLU	BLUE	BPCM-BLUE	BPCF-BLUE

T-Connector Series

NEW! YELLOW (YEL), ORANGE (ORG), BROWN (BRN) colors now available for ALL T-Connector Series shown.

CSA Approved & UL Listed

MALE CONNECTORS



FEMALE

Male Size #2-2/0 · Up to 290 Amps, 600 Volts					Female Size #2-2/0 · Up to 290 Amps, 600 Volts				
Complete Connector	Contact Only		Insulating Sleeve Only		Complete Connector	Contact Only		Insulating Sleeve Only	
Color	Part No.	Part No.	Color	Part No.	Color	Part No.	Part No.	Color	Part No.
BLACK	T20M-BLK	T20MCO	BLACK	T20MRB-BLK	BLACK	T20F-BLK	T20FCO	BLACK	T20FRB-BLK
RED	T20M-RED	T20MCO	RED	T20MRB-RED	RED	T20F-RED	T20FCO	RED	T20FRB-RED
GREEN	T20M-GRN	T20MCO	GREEN	T20MRB-GRN	GREEN	T20F-GRN	T20FCO	GREEN	T20FRB-GRN
WHITE	T20M-WHT	T20MCO	WHITE	T20MRB-WHT	WHITE	T20F-WHT	T20FCO	WHITE	T20FRB-WHT
BLUE	T20M-BLU	T20MCO	BLUE	T20MRB-BLU	BLUE	T20F-BLU	T20FCO	BLUE	T20FRB-BLU

Male Size #2/0 - 4/0 · Up to 400 Amps, 600 Volts					Female Size #2/0 - 4/0 · Up to 400 Amps, 600 Volts				
Complete Connector	Contact Only		Insulating Sleeve Only		Complete Connector	Contact Only		Insulating Sleeve Only	
Color	Part No.	Part No.	Color	Part No.	Color	Part No.	Part No.	Color	Part No.
BLACK	T40M-BLK	T40MCO	BLACK	T40MRB-BLK	BLACK	T40F-BLK	T40FCO	BLACK	T40FRB-BLK
RED	T40M-RED	T40MCO	RED	T40MRB-RED	RED	T40F-RED	T40FCO	RED	T40FRB-RED
GREEN	T40M-GRN	T40MCO	GREEN	T40MRB-GRN	GREEN	T40F-GRN	T40FCO	GREEN	T40FRB-GRN
WHITE	T40M-WHT	T40MCO	WHITE	T40MRB-WHT	WHITE	T40F-WHT	T40FCO	WHITE	T40FRB-WHT
BLUE	T40M-BLU	T40MCO	BLUE	T40MRB-BLU	BLUE	T40F-BLU	T40FCO	BLUE	T40FRB-BLU

CONNECTOR HARDWARE



Copper Shim
Part No. CS 1502



Copper Wire
Part No. CW 1406



Set Screw #2 to 4/0
Part No. SS 2/0 4/0



Phenolic Pin For Cable Inline
Part No. P 1875

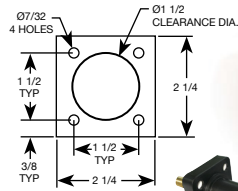
MALE PANEL MOUNTS

Threaded Stud	
Color	Part No.
BLACK	T41SM-BLK
RED	T41SM-RED
GREEN	T41SM-GRN
WHITE	T41SM-WHT
BLUE	T41SM-BLU

Double Set Screw	
Color	Part No.
BLACK	T41SMss-BLK
RED	T41SMss-RED
GREEN	T41SMss-GRN
WHITE	T41SMss-WHT
BLUE	T41SMss-BLU

Threaded Stud 45°	
Color	Part No.
BLACK	T45M-BLK
RED	T45M-RED
GREEN	T45M-GRN
WHITE	T45M-WHT
BLUE	T45M-BLU

Double Set Screw 45°	
Color	Part No.
BLACK	T45Mss-BLK
RED	T45Mss-RED
GREEN	T45Mss-GRN
WHITE	T45Mss-WHT
BLUE	T45Mss-BLU



FEMALE PANEL MOUNTS

Threaded Stud	
Color	Part No.
BLACK	T41SF-BLK
RED	T41SF-RED
GREEN	T41SF-GRN
WHITE	T41SF-WHT
BLUE	T41SF-BLU

Double Set Screw	
Color	Part No.
BLACK	T41SFss-BLK
RED	T41SFss-RED
GREEN	T41SFss-GRN
WHITE	T41SFss-WHT
BLUE	T41SFss-BLU

Threaded Stud 45°	
Color	Part No.
BLACK	T45F-BLK
RED	T45F-RED
GREEN	T45F-GRN
WHITE	T45F-WHT
BLUE	T45F-BLU

Double Set Screw 45°	
Color	Part No.
BLACK	T45Fss-BLK
RED	T45Fss-RED
GREEN	T45Fss-GRN
WHITE	T45Fss-WHT
BLUE	T45Fss-BLU

MALE COUPLINGS, T'S, 3-FERS



Parallel "T" Male/Male/Female		Inline Coupling Male to Male		3-Fer Moulded Male to F/F/F		3-Fer Moulded Male to F/F/F on 24" Cable		Tapping "T" Male/Female/Female		Inline Coupling Female to Female	
Color	Part No.	Color	Part No.	Color	Part No.	Color	Part No.	Color	Part No.	Color	Part No.
BLACK	T40PT-BLK	BLACK	T40MM-BLK	BLACK	T3F-BLK	BLACK	T3F24-BLK	BLACK	T40TT-BLK	BLACK	T40FF-BLK
RED	T40PT-RED	RED	T40MM-RED	RED	T3F-RED	RED	T3F24-RED	RED	T40TT-RED	RED	T40FF-RED
GREEN	T40PT-GRN	GREEN	T40MM-GRN	GREEN	T3F-GRN	GREEN	T3F24-GRN	GREEN	T40TT-GRN	GREEN	T40FF-GRN
WHITE	T40PT-WHT	WHITE	T40MM-WHT	WHITE	T3F-WHT	WHITE	T3F24-WHT	WHITE	T40TT-WHT	WHITE	T40FF-WHT
BLUE	T40PT-BLU	BLUE	T40MM-BLU	BLUE	T3F-BLU	BLUE	T3F24-BLU	BLUE	T40TT-BLU	BLUE	T40FF-BLU

PROTECTIVE CAPS



NEW! CAP-WSC-CLR "Clear" Now Available!



Male Connectors		Molded Panel Mount Snap Back Cover		Female Connectors	
Color	Part No.	Color	Part No.	Color	Part No.
BLACK	TPCM-BLK	BLACK	CAP-WSC-BLK	BLACK	TPCF-BLK
RED	TPCM-RED	RED	CAP-WSC-RED	RED	TPCF-RED
GREEN	TPCM-GRN	GREEN	CAP-WSC-GRN	GREEN	TPCF-GRN
WHITE	TPCM-WHT	WHITE	CAP-WSC-WHT	WHITE	TPCF-WHT
BLUE	TPCM-BLU	BLUE	CAP-WSC-BLU	BLUE	TPCF-BLU

ST-Series Connectors

CABLE SIZE #8-#4, UL LISTED 3S74 600 VOLTS UP TO 150 AMPERES

CSA Approved & UL Listed

PLUGS

Male				Female			
Color	Complete Part No.	Contact Part No.	Insulated Sleeve	Color	Complete Part No.	Contact Part No.	Insulated Sleeve
BLACK	ST4M-BLK	ST4MMCO	ST4MRB-BLK	BLACK	ST4F-BLK	ST4FCO	ST4FRB-BLK
RED	ST4M-RED	"	ST4MRB-RED	RED	ST4F-RED	"	ST4FRB-RED
GREEN	ST4M-GRN	"	ST4MRB-GRN	GREEN	ST4F-GRN	"	ST4FRB-GRN
WHITE	ST4M-WHT	"	ST4MRB-WHT	WHITE	ST4F-WHT	"	ST4FRB-WHT
BLUE	ST4M-BLUE	"	ST4MRB-BLUE	BLUE	ST4F-BLUE	"	ST4FRB-BLUE

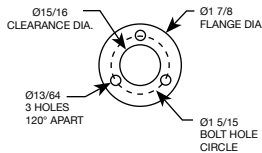
PLUG HARDWARE

SET SCREW 5/16

PHENOLIC PIN PP-80

PANEL MOUNTS

	Male	Setscrew
BLACK	ST4PMM-BLK	ST4PMMS-BLK
RED	ST4PMM-RED	ST4PMMS-RED
GREEN	ST4PMM-GRN	ST4PMMS-GRN
WHITE	ST4PMM-WHT	ST4PMMS-WHT
BLUE	ST4PMM-BLUE	ST4PMMS-BLUE



	Female	Setscrew
BLACK	ST4PMF-BLK	ST4PMFS-BLK
RED	ST4PMF-RED	ST4PMFS-RED
GREEN	ST4PMF-GRN	ST4PMFS-GRN
WHITE	ST4PMF-WHT	ST4PMFS-WHT
BLUE	ST4PMF-BLUE	ST4PMFS-BLUE



Tapping "T"



Paralleling "T"



Adaptors

Color	Female/Female/Male	Male/Male/Female	Male/Male	Female/Female
BLACK	ST4TT-BLK	ST4PT-BLK	ST4MM-BLK	ST4FF-BLK
RED	ST4TT-RED	ST4PT-RED	ST4MM-RED	ST4FF-RED
GREEN	ST4TT-GRN	ST4PT-GRN	ST4MM-GRN	ST4FF-GRN
WHITE	ST4TT-WHT	ST4PT-WHT	ST4MM-WHT	ST4FF-WHT
BLUE	ST4TT-BLUE	ST4PT-BLUE	ST4MM-BLUE	B3F-BLUEST4FF

PROTECTIVE CAPS



Color	Male	Female
BLACK	STPCM-BLK	STPCF-BLK
RED	STPCM-RED	STPCF-RED
GREEN	STPCM-GRN	STPCF-GRN
WHITE	STPCM-WHT	STPCF-WHT
BLUE	STPCM-BLUE	STPCF-BLUE





Studio Lighting Connectors

CSA Approved

CSA APPROVED

OVAL STUDIO LIGHTING CONNECTORS

No. of Contacts	AWG	Amps	Volts	Insert Sleeve	Plug Sleeve
3	12	30	600	BLACK	569371-7M
569371-7M Terminal Insert	569371-77 G+N Panel Mount	569371-77 DG Panel Mount	569371-77 DGN Panel Mount	569371-8F Terminal Insert	569371-88 G+N Panel Mount
				569371-88 DG Panel Mount	569371-88 DGN Panel Mount
					355689 Plug Sleeve

No. of Contacts	AWG	Amps	Volts	Insert Sleeve	Plug Sleeve
3	6	65	600	ORANGE	569372-7M
569372-7M Terminal Insert	569372-77 G+N Panel Mount	569372-77 DG Panel Mount	569372-77 DGN Panel Mount	569372-8F Terminal Insert	569372-88 G+N Panel Mount
					569372-88 DG Panel Mount
					569372-88 DGN Panel Mount
					1357723-2 Plug Sleeve

ROUND STUDIO LIGHTING CONNECTORS



No. of Contacts	AWG	Amps	Volts	Insert Sleeve	Male	Female	Plug Sleeve
4	6	100	600	ORANGE	569373-7M	569373-8F	1357724-1
4	2	150	600	BLACK	569221-7M	569221-8F	1357722-1



MOUNTING SHELL

504819-1 for flush mounting of 569373 inserts

