



# MASON INDUSTRIES, Inc.

Manufacturers of Vibration Control Products

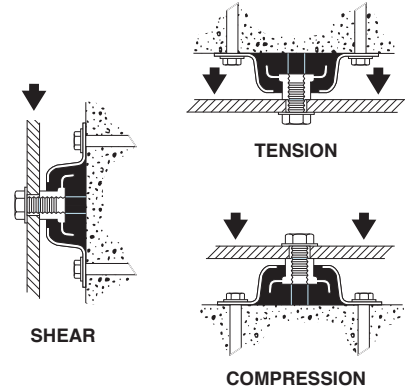
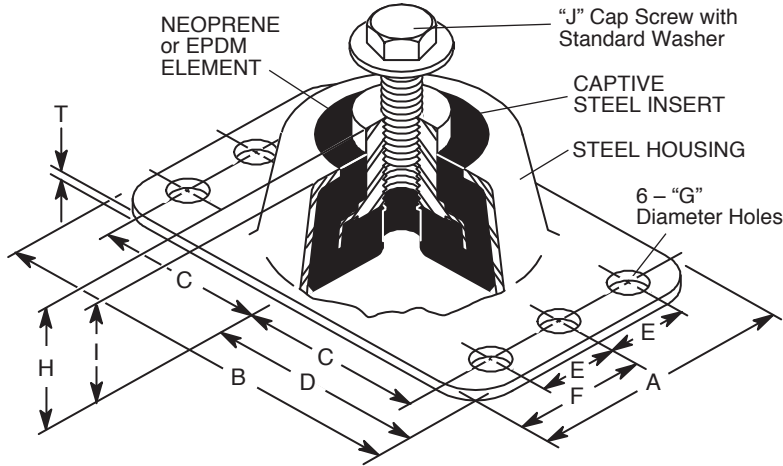
350 Rabro Drive  
Hauppauge, NY 11788  
631/348-0282  
FAX 631/348-0279

2101 W. Crescent Ave., Suite D  
Anaheim, CA 92801  
714/535-2727  
FAX 714/535-5738

Info@Mason-Ind.com • www.Mason-Ind.com

JOB NAME \_\_\_\_\_  
CUSTOMER \_\_\_\_\_  
CUSTOMER P.O. \_\_\_\_\_  
MASON M. \_\_\_\_\_  
DWG No. \_\_\_\_\_

**RAA, RBA  
RCA & RDA**  
Captive Mounting



### TYPE RAA, RBA, RCA and RDA DIMENSIONS (inches millimeters)

Type	A	B	C	D	E	F	G	H	I	J	T
<b>RAA</b>	25/8 67	41/4 108	111/16 43	21/8 54	7/8 22	15/16 33	7/16 11	11/2 38	11/8 29	3/8-16UNC x 1	3/32 2
<b>RBA</b>	3 76	43/4 121	115/16 49	23/8 60	1 25	11/2 38	7/16 11	17/8 48	11/2 38	1/2-13UNC x 11/4	3/32 2
<b>RCA</b>	33/4 95	61/4 159	21/2 64	31/8 79	11/4 32	17/8 48	9/16 14	17/8 48	11/2 38	5/8 -11UNC x 11/4	3/32 2
<b>RDA</b>	5 127	8 203	31/4 83	4 108	13/4 44	21/2 64	3/4 19	23/8 60	17/8 48	7/8 -9UNC x 11/4	1/8 3

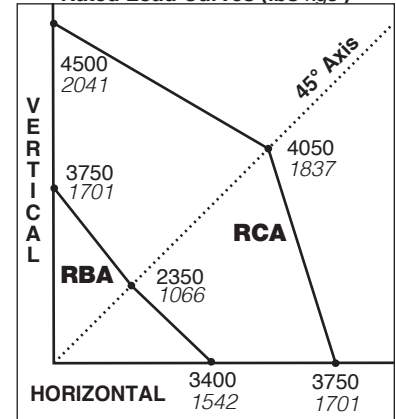
### TYPE RAA, RBA, RCA and RDA RATINGS

Type	Size (Color Mark)	Duro-meter	COMPRESSION		TENSION		SHEAR		Maximum Horizontal Static G Rating*
			Rated Capacity (lbs) (kgs)	Rated Defl (in) (mm)	Rated Capacity (lbs) (kgs)	Rated Defl (in) (mm)	Rated Capacity (lbs) (kgs)	Rated Defl (in) (mm)	
<b>RAA-</b>	Black	30	200	91	150	68	150	68	7.0
	Green	45	300	136	200	91	200	91	5.0
	Red	50	500	227	400	181	400	181	2.5
<b>RBA-</b>	Black	30	250	113	200	91	200	90	13.6
	Green	45	525	238	420	191	420	191	6.5
	White	60	1000	454	800	363	800	363	3.4
<b>RCA-</b>	Green	40	1400	635	1000	454	400	181	2.7
	Red	50	2100	953	1500	680	600	272	1.8
	White	60	3500	1588	2500	1134	1000	454	1.1
<b>RDA-</b>	Green	40	2800	1270	2000	910	900	410	3.3
	Red	50	4200	1910	2900	1320	1300	590	2.2
	White	60	7100	3230	4200	1910	1800	820	1.3

All Rated Capacities are based on proper neoprene loadings without metal to metal contact. Seismic Max. G Ratings are based on metal failure under static seismic loadings as defined in the building codes.

\*Horizontal G Ratings are for quick reference only— Use OSHPD Rated Load Curves.

### OSHPD OPA-0200 Rated Load Curves (lbs kgs<sup>1</sup>)



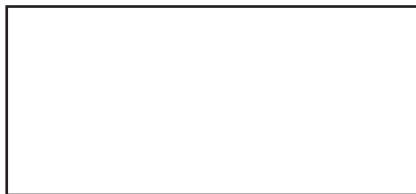
Horizontal, Vertical and 45° plotted Ratings are California OSHPD approved values having the OSHPD Anchorage Preapproval Number OPA-0200. Testing and calculations were performed to meet OSHPD criteria.

**To use approved OSHPD rated load curves:** 1) Calculate Vertical and Horizontal Forces on mounting including translations and overturning moments. 2) Plot Horizontal Load vs Vertical Load. The point must fall within the area below the OSHPD curve. RAA's and RDA's have not been submitted to OSHPD.

Note: OSHPD changed requirements in California in 2010, but the reference remains excellent as a general guideline.

### PLAN VIEW OF MOUNT LOCATIONS

TAG: \_\_\_\_\_  
UNIT: \_\_\_\_\_



### SPECIFIED DEFLECTION

1:	6:
2:	7:
3:	8:
4:	9:
5:	10:
Sets Required:	