



Beaver Electrical Machinery Ltd.

Date: August 11, 2022





Technical Documentation

# **FD1/54**

## **Farm Duty | BECCFD**

Beaver Electrical Machinery Ltd.

Date: August 11, 2022

	Beaver Electrical Machinery Ltd.	
	Date: August 11, 2022	

### Technical Data Sheet

Motor Type: BECCFD	Catalogue No: FD1/54
--------------------	----------------------

#### Nameplate Information

HP	Pole	RPM	Frame	Voltage	Hz	Phase
1.5	4	1740	145T	115 / 230	60	1
Enclosure	Ins. Class	Service Factor	Time Rating	NEMA Design	Rated Amb.	Rated Altitude
TEFC	F	1.15	Continuous		-40 to 40 °C	<1000 m

#### Typical Performance

Efficiency (%)				Power Factor (%)		
Full Load		3/4 Load	1/2 Load	Full Load	3/4 Load	1/2 Load
Nom.	Min.					
70				63		
Torque				Current (A)		
Full Load (lb-ft)	Locked Rotor (% FLT)	Pull Up (% FLT)	Break Down (% FLT)	No Load	Full Load	Locked Rotor
4.5	350		260		22.0 / 11.0	116 / 58
NEMA KVA Code	Inertia (WR <sup>2</sup> )			Safe Stall Time (s)		Noise Level Sound Press. dB(A)
	Rotor (lb-ft <sup>2</sup> )	NEMA Load (lb-ft <sup>2</sup> )	Max. Allowable (lb-ft <sup>2</sup> )	Cold	Hot	

#### VFD Duty Information

Max HP	Current (A)	Speed Range		VFD		S.F.
		Constant Torque	Variable Torque	Carrier Hz	Type	

#### Hazardous Locations Information



Temp Code (Sinewave / VFD)	/
----------------------------	---

#### Additional Certifications

Other Certification
---------------------

#### Additional Information

Bearings		Approx. Weight
DE	NDE	lbs
6205ZZ	6205ZZ	70

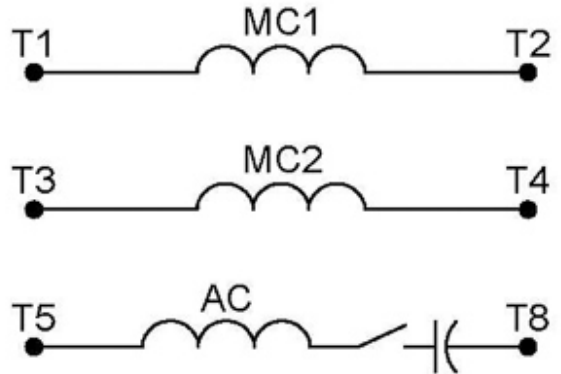
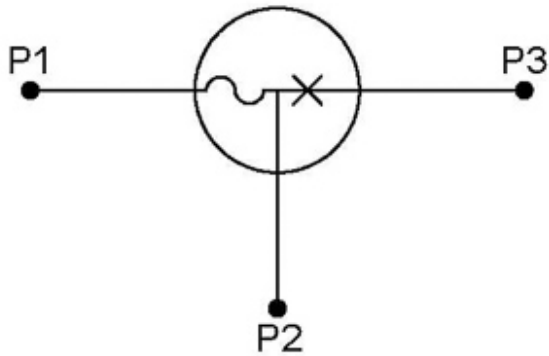
	Beaver Electrical Machinery Ltd.	
	Date: August 11, 2022	

### Nameplate Drawing

Farm Duty					
TYPE	BECCFD	CAT. NO.	FD1/54		
OUTPUT	1.5 HP 1.12 kW	FRAME	145T	TEFC	
R.P.M.	1740	POLE	4	INS.	F
VOLTS	115 / 230	PHASE	1	Hz	60
AMPS	22.0 / 11.0	CODE		S.F.	1.15
AMBIENT	40 °C	NOM. EFF. 70		MIN. EFF.	
BEARINGS	6205ZZ / 6205ZZ			RATING Cont.	
SER. NO.	TBD	DESIGN		WT. 70 LBS	
PWM VFD DUTY	VT	CT	CP	S.F.	



**Connection Diagram**



9 LEAD DUAL VOLTAGE		CAPACITOR START		
VOLTAGE	ROTATION	L1	L2	JOIN
HIGH	CCW	P1	4	2&3&5, P2&8
	CW	P1	4	2&3&8, P2&5
LOW	CCW	P1	2,4,5	P2,3,8
	CW	P1	2,4,8	P2,3,5

WD\_9CS