



Beaver Electrical Machinery Ltd.

Date: August 11, 2022





Technical Documentation

FD0/74

Farm Duty | BEGCFD

Beaver Electrical Machinery Ltd.

Date: August 11, 2022

	Beaver Electrical Machinery Ltd.	
	Date: August 11, 2022	

Technical Data Sheet

Motor Type: BEGCFD	Catalogue No: FD0/74
--------------------	----------------------

Nameplate Information

HP	Pole	RPM	Frame	Voltage	Hz	Phase
0.75	4	1750	56	115 / 230	60	1
Enclosure	Ins. Class	Service Factor	Time Rating	NEMA Design	Rated Amb.	Rated Altitude
TEFC	F	1.15	Continuous		-40 to 40 °C	<1000 m

Typical Performance

Efficiency (%)				Power Factor (%)		
Full Load		3/4 Load	1/2 Load	Full Load	3/4 Load	1/2 Load
Nom.	Min.					
66				59		
Torque				Current (A)		
Full Load (lb-ft)	Locked Rotor (% FLT)	Pull Up (% FLT)	Break Down (% FLT)	No Load	Full Load	Locked Rotor
0.3	330		285		12.2 / 6.1	65 / 32.5
NEMA KVA Code	Inertia (WR ²)			Safe Stall Time (s)		Noise Level Sound Press. dB(A)
	Rotor (lb-ft ²)	NEMA Load (lb-ft ²)	Max. Allowable (lb-ft ²)	Cold	Hot	
	0.098					

VFD Duty Information

Max HP	Current (A)	Speed Range		VFD		S.F.
		Constant Torque	Variable Torque	Carrier Hz	Type	

Hazardous Locations Information



Temp Code (Sinewave / VFD)	/
----------------------------	---

Additional Certifications

Other Certification

Additional Information

Bearings		Approx. Weight
DE	NDE	lbs
6205ZZ	6203ZZ	38

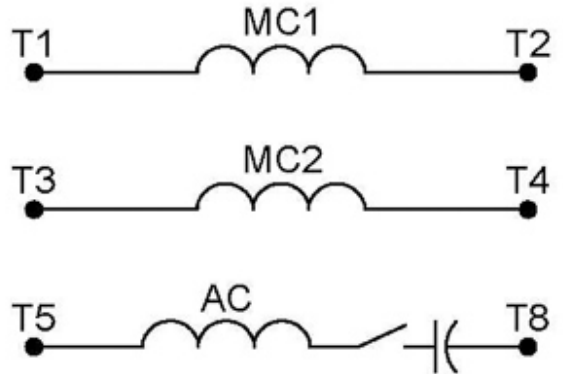
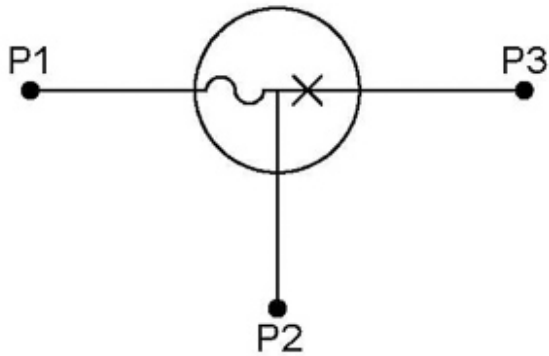
	Beaver Electrical Machinery Ltd.	
	Date: August 11, 2022	

Nameplate Drawing

Farm Duty					
TYPE	BEGCFD	CAT. NO.	FD0/74		
OUTPUT	0.75 HP 0.56 kW	FRAME	56	TEFC	
R.P.M.	1750	POLE	4	INS.	F
VOLTS	115 / 230	PHASE	1	Hz	60
AMPS	12.2 / 6.1	CODE		S.F.	1.15
AMBIENT	40 °C	NOM. EFF. 66		MIN. EFF.	
BEARINGS	6205ZZ / 6203ZZ			RATING Cont.	
SER. NO.	TBD	DESIGN		WT. 38 LBS	
PWM VFD DUTY	VT	CT	CP	S.F.	



Connection Diagram



9 LEAD		DUAL VOLTAGE		CAPACITOR START
VOLTAGE	ROTATION	L1	L2	JOIN
HIGH	CCW	P1	4	2&3&5, P2&8
	CW	P1	4	2&3&8, P2&5
LOW	CCW	P1	2,4,5	P2,3,8
	CW	P1	2,4,8	P2,3,5

WD_9CS