



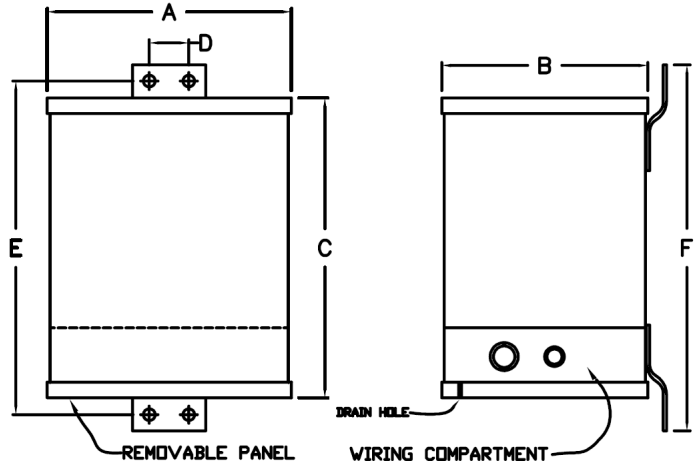
BEAVER ELECTRICAL MACHINERY
 7440 LOWLAND DRIVE, BURNABY, BC, CANADA
 TEL: (604) 431-5000 FAX: (604) 431-5066
 www.beaverelectrical.com

**AER SERIES
 SPECIFICATION SHEET**

**3 PHASE TRANSFORMER
 TYPE: EPOXY ENCAP. AUTO
 WALL MOUNTABLE**

CAT. NO.: AER15TS4C
 KVA: 15
 VOLT: 600Y / 480Y
 PHASE: 3
 FREQ: 60 HZ
 WINDING MATL: Copper
 WEIGHT: 65 LBS
 INSUL. CLASS: 200°C
 TEMP. RISE: 135°C
 TAPS: SEE BELOW
 BIL: 10 kV
 ENCLOSURE: NEMA Type 3R
 APPROVALS: UL, CSA

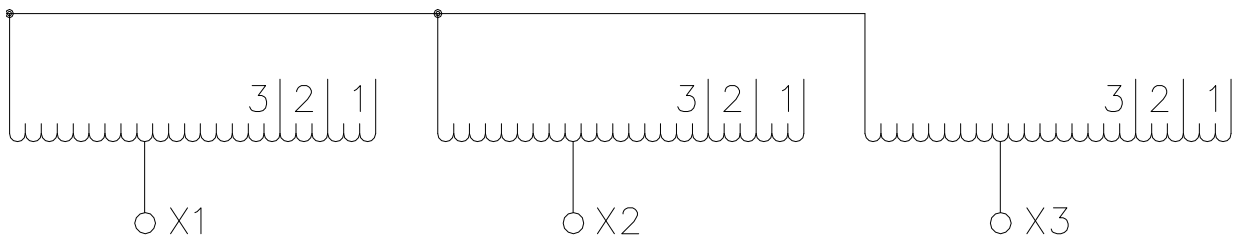
OUTLINE DRAWING



A	7.5"
B	6.375"
C	11.5"
D	2"
E	12.25"
F	13"

WIRING AND CONNECTION DIAGRAM

VOLT	LINE CONN
630	1, 1, 1
600	2, 2, 2
575	3, 3, 3
480	X1, X2, X3



>>NOTE: Preliminary drawing only.<<

This drawing may not reflect our final design. Approval drawings should be requested in critical applications