



CUSTOMER TERMINATION			
LOCATION	CONNECTION TYPE	HOLE SIZE	HOLE QTY
PRIMARY BUS BARS	STANDARD BUS BAR (LUGS ARE OPTIONAL)	.40 [10.2] DIA	2 PER BUS BAR
SECONDARY BUS BARS			

<b>APPROX TOTAL WEIGHT LBS [KG]</b>	
<b>PAINTED:</b>	<b>513 [233]</b>
<b>STAINLESS STEEL:</b>	<b>518 [235]</b>

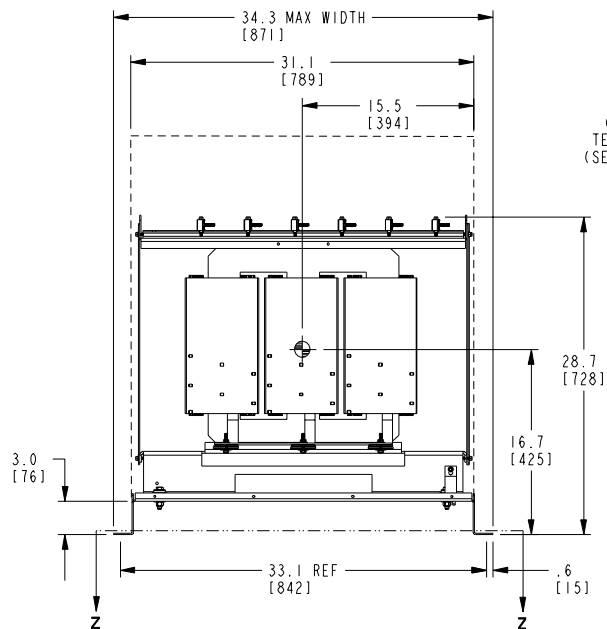
<b>kVA RATING:</b>	75
<b>K-FACTOR:</b>	K1
<b>PRI VOLTAGE:</b>	480
<b>SEC VOLTAGE:</b>	208Y/120
<b>FREQ (Hz):</b>	60 Hz
<b>TEMP RISE:</b>	150C
<b>WINDING MATL:</b>	Aluminum
<b>ES SHIELD:</b>	NO
<b>SOUND LVL (dB):</b>	Std (50)

**NOTES:**

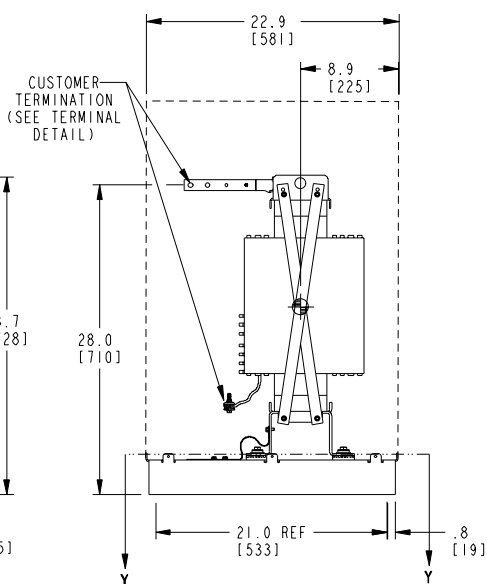
- 1) ALL UNITS ARE UL LISTED AND ARE DESIGNED PER NEMA ST-20 STANDARDS.
- 2) THE TEMPERATURE RISE LISTED WAS DETERMINED WHEN THE TRANSFORMER WAS MOUNTED IN A STANDARD NEMA-2 ENCLOSURE.
- 3) TRANSFORMER IS DESIGNED FOR FLOOR MOUNTING. OPTIONAL WALL MOUNTING BRACKETS ARE AVAILABLE.
- 4) TRANSFORMER IS DRY TYPE, CLASS AA, WITH VENTILATED ENCLOSURE FOR INDOOR USE. OPTIONAL RAINSHIELD KITS ARE AVAILABLE TO ADAPT UNIT FOR TYPE 3R OUTDOOR USE WITHOUT VOIDING THE WARRANTY.
- 5) APPLICABLE WHEN OPTIONAL RAINSHIELDS ARE INSTALLED. RAINSHIELDS ARE SHIPPED IN KITS FOR FIELD INSTALLATION.
- 6) CABLE ENTRANCE IS PERMITTED THROUGH THE LEFT SIDE, RIGHT SIDE AND/OR BOTTOM ENTRANCE ONLY. CABLE ENTRANCE IS NOT PERMITTED THROUGH THE FRONT, REAR OR TOP PANELS.
- 7) FOR LIFTING OTHER THAN WITH A FORK TRUCK, REMOVE TOP COVER AND USE 1" [25 MM] DIAMETER HOLES IN THE TOP CORE CLAMPS.
- 8) ENCLOSURE PAINT COLOR IS ANSI #61 GRAY.  
OPTIONAL STAINLESS STEEL ENCLOSURE IS AVAILABLE. FINISH IS #80 GRIT.
- 9) 6" [152 MM] MINIMUM CLEARANCE IS REQUIRED FROM ALL WALLS.
- 10) USE THIS DIMENSION WHEN PLANNING THE MOUNTING PAD.

JOB NAME:	UNLESS OTHERWISE SPECIFIED ALL DIMENSIONS ARE INCH [MM]			
	THIRD ANGLE PROJECTION 	DRY TYPE TRANSFORMER OUTLINE DRAWING TYPE QL, 3-PHASE, DOE 2016 EFFICIENCY (ENCLOSED UNIT)		
<a href="http://electrification.us.abb.com">electrification.us.abb.com</a>		CATALOG #	9T10A1004	REV 2
CAD DRAWING: 303B111GEUYP14A	SHEET 1 OF 2			

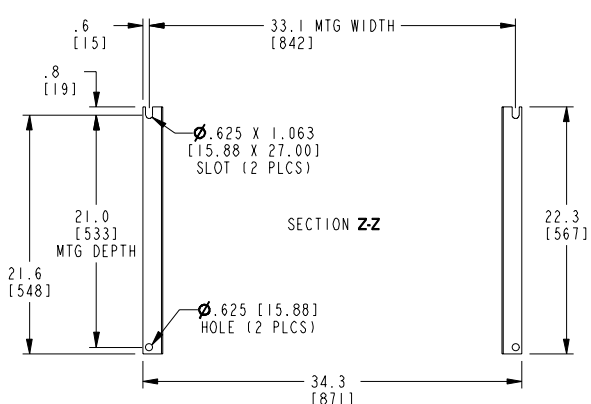
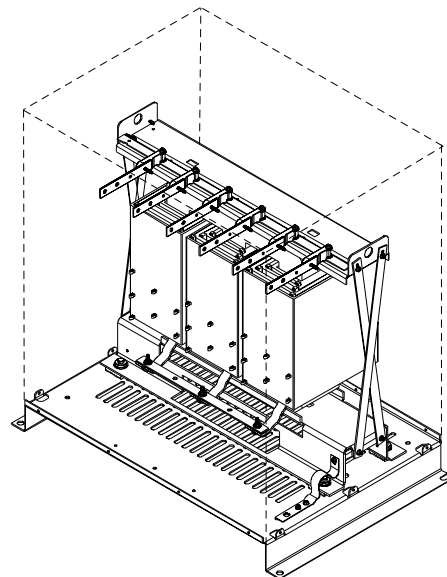
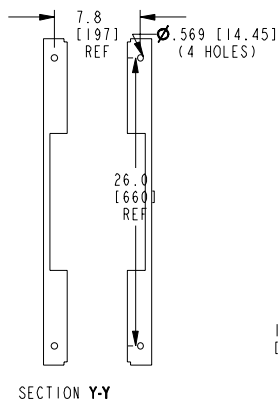
FRONT VIEW



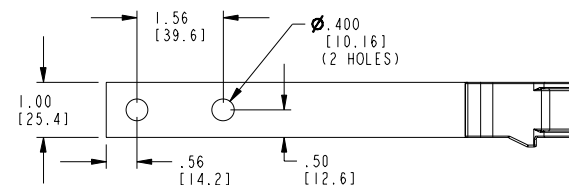
SIDE VIEW



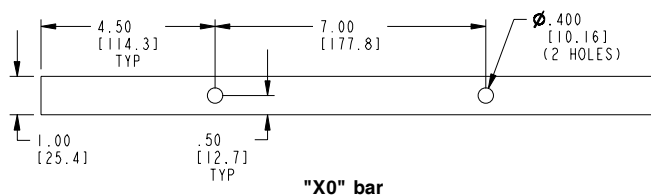
ISOMETRIC VIEW

BOTTOM VIEW OF  
MOUNTING HOLE PATTERNBOTTOM VIEW OF  
MOUNTING HOLE PATTERN  
WITHOUT BASE ATTACHED

TERMINAL DETAIL



X's &amp; H's TERMINAL



"X0" bar

CONNECTION TYPE: STANDARD BUS BAR (LUGS ARE OPTIONAL).

APPROX TOTAL WEIGHT LBS [KG]  
PAINTED: 439 [200]

kVA RATING: 75  
K-FACTOR: K1  
PRI VOLTAGE: 480  
SEC VOLTAGE: 208Y/120  
FREQ (Hz): 60 Hz  
TEMP RISE: 150C  
WINDING MATL: Aluminum  
ES SHIELD: NO  
SOUND LVL (dB): Std (50)

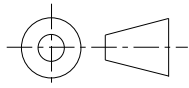
## NOTES:

- 1) ALL UNITS ARE UL LISTED AND ARE DESIGNED PER NEMA ST-20 STANDARDS.
- 2) THE TEMPERATURE RISE LISTED WAS DETERMINED WHEN THE TRANSFORMER WAS MOUNTED IN A STANDARD NEMA-2 ENCLOSURE.
- 3) TRANSFORMER IS DRY TYPE, CLASS AA FOR INDOOR USE.
- 4) FOR LIFTING OTHER THAN WITH A FORK TRUCK, USE 1" [25 MM] DIAMETER HOLES IN THE TOP CORE CLAMPS.
- 5) BASE PAINT COLOR IS ANSI #61 GRAY.
- 6) 6" [152 MM] MINIMUM CLEARANCE IS REQUIRED FROM ALL WALLS.
- 7) ⊕ INDICATES APPROXIMATE CENTER OF GRAVITY.

JOB NAME:

UNLESS OTHERWISE SPECIFIED  
ALL DIMENSIONS ARE INCH [MM]

THIRD ANGLE PROJECTION



[electrification.us.abb.com](http://electrification.us.abb.com)

CAD DRAWING: 303B111GEUY14A

SHEET 2 OF 2

**ABB**

**DRY TYPE TRANSFORMER OUTLINE DRAWING  
TYPE QL, 3-PHASE, DOE 2016 EFFICIENCY  
(CORE & COIL UNIT)**

CATALOG # 9T10A1004

REV **2**